

Connectrix

Storage Networking for the Modern Data Center



Connectrix Enables Business Applications

The Connectrix family of directors and switches moves your vital business information to where it's needed securely, with the highest performance, the highest availability and unsurpassed reliability. Connectrix is the only storage networking platform that offers the widest range of connectivity networking options and Dell EMC E-Lab guaranteed interoperability testing. Connectrix products can connect physical or virtual servers through Fibre Channel Storage Area Networks (SAN) technology. Connectrix enables all application environments from Oracle, Microsoft and SAP to local backup/restore, and business continuity/disaster recovery solutions over distance.

Connectivity Matters for All Flash Storage

All-flash storage environments in the modern data center, require a network that is deterministic, and easy to manage with low latencies. Connectrix has always delivered low latency, deterministic behavior, scalability and reliability. So, as you modernize your data center, make sure your storage network can keep pace. Today's storage networks deliver up to 32 Gigabit per second (Gb/s) Fibre Channel speeds. The latest Connectrix systems include exclusive diagnostic and error-collection capabilities, as well as the ability to monitor, analyze and identify specific data to avoid errors, reduce bottlenecks and automate your networking resources. The latest Connectrix models also allow seamless transition to Fibre Channel Non-Volatile Memory Express (FC-NVMe) workloads without any hardware upgrade in the SAN.

Thinking about Moving to Flash or Upgrading Your Storage? Get a Free Storage Network Assessment

If you're thinking about upgrading your storage environment or moving to all flash storage systems, make sure your storage network isn't a bottleneck by running a SAN Health Check. SAN Health Check is a free tool that creates comprehensive analysis about your storage network including performance graphs, detailed spreadsheets and topology diagrams. SAN Health Check creates a consolidated view of the data in electronic presentation form.

Connectrix Delivers High Performance, High Availability, Flexible Scalability with Unsurpassed Reliability

The Connectrix offering allows you to start small and scale as you grow—whether you begin by implementing a small storage networking solution for one department or a large configuration for an enterprise-wide application. With Connectrix you can concurrently support multiple hosts and operating systems as well as accommodate storage environments from other suppliers. This extensible connectivity frees you to consolidate more information onto fewer storage systems with E-Lab’s assurance of seamless interoperability and common fabric management capability across the network.

Connectrix Directors and Switches

To meet your storage networking requirements, we offer two Connectrix product lines. Both the Connectrix B-Series and Connectrix MDS product lines include enterprise directors, switches and multi-purpose switch offerings. Enterprise Directors are ready for the most demanding mission-critical environments, providing immediate, non-disruptive and automatic failover.

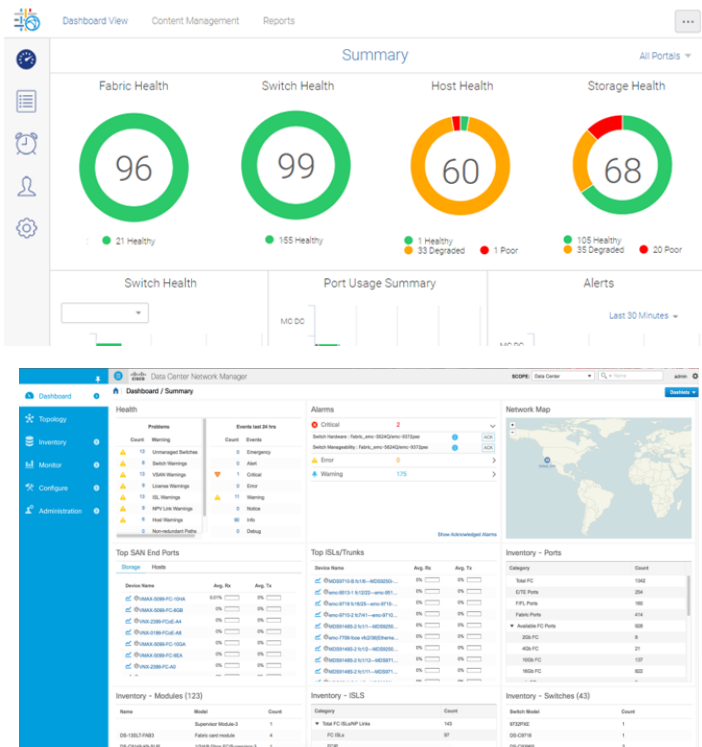
Resident diagnostics quickly identify system anomalies. The comprehensive Connectrix switch offering is ready to meet any of your configurations and connectivity needs. Switches deliver high availability through redundant connections and support the same resilient and automated features as directors.

Connectrix Network Management

SANnav Portal and Global View is the next generation Management software for the Connectrix B-Series. SANnav empowers IT administrators to be more efficient and productive by providing comprehensive visibility into the SAN environment. These tools transform information about SAN behavior and performance into actionable insights, allowing administrators to quickly identify, isolate and correct problems before they impact the business.

Legacy Connectrix Manager Converged Network Edition (CMCNE) for the Connectrix B-Series, provides fabric and device management across the SAN. CMCNE delivers health and performance dashboards, with an easy to use Graphical User Interface and comprehensive features that automate repetitive tasks.

For Connectrix MDS customers, Data Center Network Manager (DCNM) enables storage and network administrators to troubleshoot the health and performance of their Connectrix MDS environment. DCNM simplifies network deployment by providing wizard and template-based provisioning and configuration with an easy-to-use Graphical User Interface. DCNM also provides proactive monitoring and problem diagnosis, which results in less time spent on troubleshooting problems.



Connectrix Director and Switch Model Numbers

All Connectrix models listed in the tables below support auto-sensing speeds for backward compatibility, non-disruptive code upgrades and redundant hot-swappable components for high availability. All 16Gb/s and 32Gb/s switches and directors are NVMe over Fabric-ready.



Table 1: Switch Models

Connectrix Fibre Channel Switch Models	Maximum Fibre Channel Speed	Maximum Ports	Minimum Ports
DS-6505B	16Gb/s	Up to 24 ports	12-port base
DS-6510B	16Gb/s	Up to 48 ports	24-port base
DS-6520B	16Gb/s	Up to 96 ports	48-port base
DS-6610B	32Gb/s	Up to 24 ports	8-port base
DS-6620B	32Gb/s	Up to 64 ports	24-port base
DS-6630B	32Gb/s	Up to 128 ports	48-port base
MDS-9148S	16Gb/s	Up to 48 ports	12-port base
MDS-9396S	16Gb/s	Up to 96 ports	48-port base
MDS-9132T	32Gb/s	Up to 32 ports	8-port base
MDS-9148T	32Gb/s	Up to 48 ports	24-port base
MDS-9396T	32Gb/s	Up to 96 ports	48-port base

Table 2: Multi-purpose Switch Models

Connectrix Multi-Purpose Switch Models	Ports and Maximum Speeds	Use Cases and Protocols
MP-7800B	16 8Gb/s FCP ports and six 1 Gigabit Ethernet (GbE) ports	Distance Extension with FCiP, Fibre Channel Protocol (FCP) and Mainframe FICON
MP-7810B	Twelve 32Gb capable Fibre Channel ports and six 1/10GbE SFP+ ports	Distance Extension with FCiP, Fibre Channel Protocol (FCP) and IP Extension (IPEX)
MP-7840B	24 16Gb FCP ports, sixteen 1/10 Gigabit Ethernet (GbE) ports and two 40GbE ports.	Distance Extension with FCiP, Fibre Channel Protocol (FCP), IP Extension (IPEX) and Mainframe FICON
MDS-9250i	40 16Gb FCP ports, two 10GbE ports and eight FCoE	Distance Extension with FCiP, Mainframe FICON, FCoE and Fibre Channel
CNX-S4048	48 10GbE plus 40GbE ports	IP Networking Switch

Table 3: Enterprise Director Models

Connectrix Director Models	Maximum Fibre Channel Speed	Maximum Ports	Protocols
ED-DCX6-8B	32Gb/s	Up to 512 ports	FCP, FCiP and FICON
ED-DCX6-4B	32Gb/s	Up to 256 ports	FCP, FCiP and FICON
ED-DCX8510-8B	16Gb/s	Up to 512 ports	FCP, FCiP, FCoE and FICON
ED-DCX8510-4B	16Gb/s	Up to 256 ports	FCP, FCiP, FCoE and FICON
MDS-9718	32Gb/s	Up to 768 ports	FCP, FCiP, FCoE
MDS-9710	32Gb/s	Up to 384 ports	FCP, FCiP, FCoE and FICON
MDS- 9706	32Gb/s	Up to 192 ports	FC, FCiP, FCoE and FICON



[Learn more](#) about Connectrix



[Contact](#) a Dell EMC Expert



[View more](#) resources



Join the conversation with #GetModern